

20 hours' tuition
per week

*Explore a unique part of England on an
intensive programme*



DATES
2nd July – 30th July 2025
(2, 3 or 4 weeks)



LOCATION
Shrewsbury School,
Shrewsbury, SY3 7BA

WHY CHOOSE THIS PROGRAMME?

At Shrewsbury we offer 3 academies on one campus (English Academy, Sports Academy, Coding & Tech Academy). You can choose a different option each week or continue with one throughout your stay.

Shrewsbury is well-known as a traditional independent school. It was founded in 1552 and has Charles Darwin amongst its famous 'old boys'. It is situated across the River Severn from the lively market town of Shrewsbury. Manchester and Birmingham airports are approximately 1.5 hours by road; London Heathrow 3-4 hours.

It has an outstanding campus with both traditional and modern buildings. The school's impressive sporting facilities include sports pitches, an astroturf, tennis, squash and fives courts, an indoor sports hall and 25m 6-lane swimming pool. There are large IT suites, an art studio and a theatre.

ACADEMIC PROGRAMME

- **Levels:** beginner to advanced (A1-C1)
- **20 hours' tuition per week** including **15 hours'** English Skills, English Workshops and end-of-week presentations **plus 5 hours'** Active English (local study visits with your teacher)
- **Optional exam:** Trinity Graded Exam in Spoken English offered on 15 or 29 July 2025 (£130) www.discoverysummer.co.uk/trinity
- Maximum class size: **12 international students**

ACTIVITY PROGRAMME

- **Mornings:** A choice of sports, team challenges, arts and crafts, dance and drama games on 4 mornings per week
- **Evenings:** Exciting range of evening activities e.g. mystery nights, talent shows, British games, discos and relaxed nights in houses
- **Special events:** Pool party, Ceilidh (traditional dancing)
- **Excursions:** 2 per week e.g. Chester, Warwick Castle, Severn Valley Railway, Blists Hill Victorian Town
- **Free time:** Relax and enjoy time with your new friends.



ACCOMMODATION & SUPERVISION

- Shrewsbury has comfortable boarding houses with **1-4 bedded rooms**. Shared bathrooms
- Staff/student ratio at least 1:4
- **Resident house parents** look after you throughout your stay
- 3 meals a day and snacks provided. A **healthy range of food** to suit international students
- **Restricted access to mobile phones**



Lots of opportunities to experience British culture and speak English with our English Student Hosts!



Make English Friends

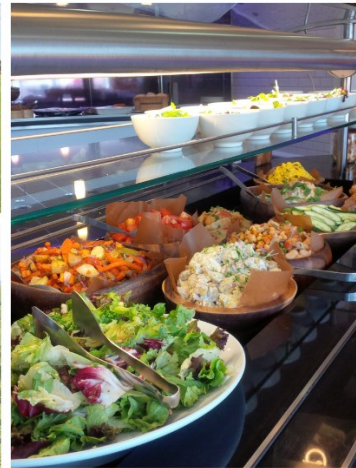
Also at Shrewsbury:

The **Sports Academy** is an intensive programme for those who are passionate about sports. Options include: Golf, Horse-Riding, Adventure Sports, Tennis.

The **Coding & Tech Academy** is designed for students in learning the fundamentals of code, robotics and game design.



	ARRIVAL	DEPARTURE	WEEKS	FEES
16	Wed 2 July	Wed 16 July	2	£3,600
17	Wed 2 July	Wed 23 July	3	£5,400
18	Wed 2 July	Wed 30 July	4	£7,200
19	Wed 9 July	Wed 30 July	3	£5,400
20	Wed 16 July	Wed 30 July	2	£3,600



Free airport transfers from Heathrow, Birmingham and Manchester

